

## **2<sup>nd</sup> announcement**

**June 25 2018**

### **1<sup>st</sup> European conference**

# **‘BIM and energy performance of buildings’**

Brussels –Belgium

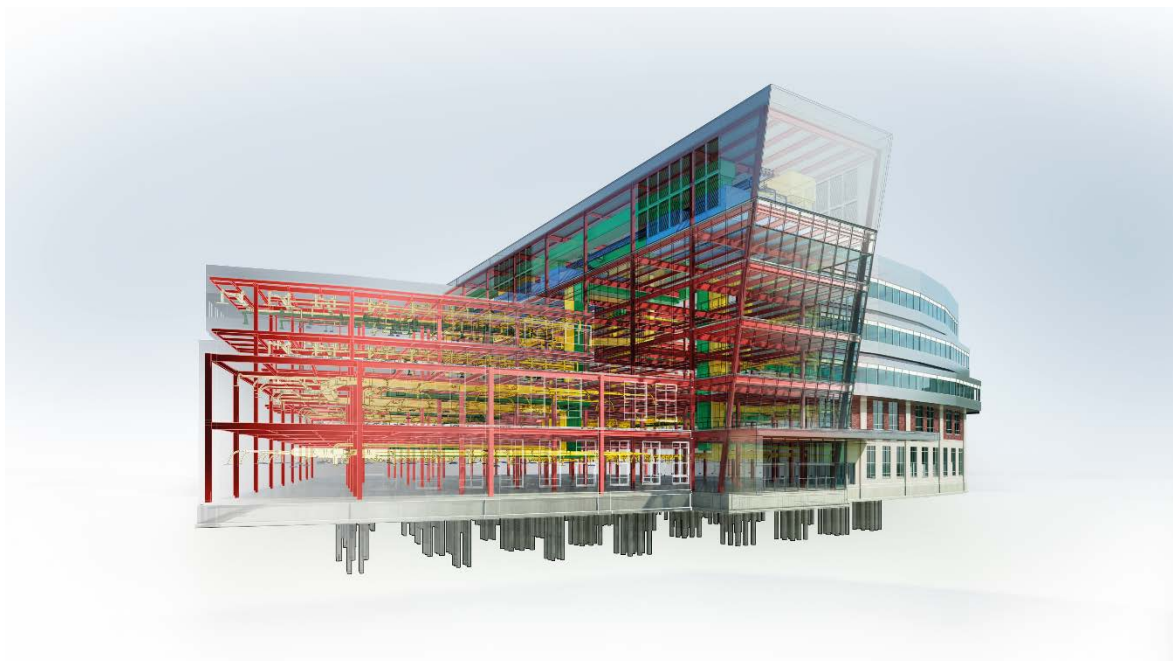
#### **Context of the conference**

The market uptake of BIM (Building Information Modelling) is rapidly growing in nearly all European countries and one can assume that this trend will continue and even accelerate in the coming years.

In practice, there was until recently in most countries little to no attention for BIM as a support tool for the regulatory assessment of the energy performance of buildings. A smart use of BIM can be a win-win situation for both areas, whereby there surely are still several bottlenecks and challenges ahead of us.

This first conference, organised by INIVE EEIG on behalf of the QUALICheck platform, aims to present the status of BIM and opportunities and challenges regarding BIM use for the regulatory assessment of the energy performance of buildings. The aim is also to explore possibilities and challenges for an accelerated interaction/integration.

The programme will cover visions of needs, on-going research and development work as well as demos of already existing solutions and panel discussions.



## Provisional programme

8:30 Welcome coffee

---

9:00 Session 1 - chairs: Amandine De Coster - Lacourt (EASME) and Peter Wouters (QUALICHeCK)

- Welcome and context of the conference – Johan Willemen (past president FIEC and president BBRI)
  - Interactive voting moderated by Prof. Arnold Janssens (UGent)
  - Revision of the Energy Performance of Buildings Directive – Sylvain Robert (DG ENER)
  - History of BIM developments and expectations for the future – prof. Stefaan Boeykens (KUL and D-Studio)
  - BIM implementation in EU member states and other regions and expected developments – Léon Van Berlo (TNO)
  - Demonstration “BIM as working today” – Thomas Vandenberg (Besix and president BBRI technical committee ‘ICT and BIM’)
- 

10:30 Coffee break

---

11:00 Session 2

- Commission initiatives for the modernisation of construction: digitalisation, BIM and energy performance of buildings – Lutz Köppen (DG GROW)
  - Product and system modelling using the web and linked data – Prof. Pieter Pauwels (Chair LBD-W3C and UGent)
  - Panel discussion “Construction 4.0 and BIM”
    - o DG GROW – FIEC – EBC and others
  - Application of BIM to the assessment of the energy performance of buildings – Peter Wouters (INIVE EEIG and QUALICHeCK platform)
  - Demonstration “Focus on energy, environment, indoor climate modelling and simulation with BIM – Benjamin Gonzales (CYPE) and Patrick Corrales (CSTB)
- 

13:00 Lunch

---

14:00 Session 3 – chairs: Jens Laustsen (EPBD CA coordinator) and Philippe Moseley (EASME)

- Horizon 2020 support for BIM in energy efficient buildings – Philippe Moseley (EASME)
  - BIMplement – BIM and energy efficiency skills
  - BERTIM – Using BIM for renovation with prefabrication
  - Could we rethink the French building legislation in the context of BIM? – Thomas Welsch (Directorate of Housing, Urbanism and Landscape)
- 

15:15 Coffee break

---

15:45 Session 4 – chairs: Gunnar Grün (Fraunhofer IBP) and Jean-Christophe Visier (CSTB)

- Standardisation challenges for the energy performance assessment in a BIM context – Dick van Dijk (EPB-research)
  - Demonstration “Use of BIM for design of installations, energy performance and comfort evaluation” – Nielst Vercaemst (Ingenium)
  - Panel discussion about BIM and the energy performance of buildings assessment with representatives from government and stakeholders
    - o DG ENER – BPIE – CEN – NVBV - eu.bac - EURIMA – venticool
  - Interactive voting part 2 – moderated by Prof. Arnold Janssens (UGent)
  - Conclusions – Jean-Christophe Visier (CSTB)
- 

17:00 Reception

## Organisers

This conference is organised by INIVE EEIG on behalf of the QUALICheck platform ([www.qualicheck-platform.eu](http://www.qualicheck-platform.eu)). The members of INIVE EEIG are BBRI, CETIAT, CSTB, eERG, Fraunhofer IBP, NKUA, SINTEF, TMT US and TNO ([www.inive.org](http://www.inive.org)).



QUALICheck  
Towards better quality and compliance

## Supporter and endorsement

The conference receives support and endorsement from the following international organisations (preliminary list):

- BPIE ([www.bpie.eu](http://www.bpie.eu))
- ES-SO ([www.es-so.com](http://www.es-so.com))
- EBC ([www.ebc-construction.eu](http://www.ebc-construction.eu))
- eu.bac ([www.eubac.org](http://www.eubac.org))
- EURIMA ([www.eurima.eu](http://www.eurima.eu))
- EuroACE ([www.euroace.org](http://www.euroace.org))
- FIEC ([www.fiec.eu](http://www.fiec.eu))
- REHVA ([www.rehva.eu](http://www.rehva.eu))
- TightVent platform ([www.tightvent.eu](http://www.tightvent.eu))
- venticool platform ([www.venticool.eu](http://www.venticool.eu))



In addition, there is specific support at Belgian level from:

- The cluster BIM ([www.bimportal.be](http://www.bimportal.be))
- The Technical Committee 'BIM and ICT' of the Belgian Building Research Institute
- The Strategic Basic Research Project NEPBC, supported by the Research Foundation – Flanders (FWO)
- The pre-normative research project CODEC supported by the Federal Public Services



We like also to thank the Flemish Energy Agency (VEA) for providing the conference facilities.

## Registration and fee

Registration can be done by google form: [Please register here](#)

The workshop fee is:

- Governmental organisations: free of charge<sup>1</sup>
- Students: free of charge<sup>1</sup> but only after confirmation by organisers of acceptance by June 15
- Others: 121 € (VAT included).

Free of charge<sup>1</sup>: In case of no-show, an invoice of 50 € will be send

This fee includes participation to the conference, documentation, lunch, coffee breaks and reception. The number of seats is limited to 200. You will receive an official confirmation from [sd@bbri.be](mailto:sd@bbri.be) after registration on line or by e-mail.

## Venue

The conference will take place in the Conscience Building (Auditorium Hadewych, Koning Albert II-laan / Boulevard Roi Albert II, 1210 Brussels. It is within walking distance of Brussels North railway station.

## Language

English will be the official language. No translation is foreseen.

## Secretariat

For additional information, please contact Stéphane Degauquier at BBRI: Avenue P. Holoffe 21, B 1342 Limelette, Belgium – tel: +32.2.655.77.11 - [sd@bbri.be](mailto:sd@bbri.be)

## About the QUALICHeCK project and platform - [www.qualicheck-platform.eu](http://www.qualicheck-platform.eu)

The challenges to implement Nearly Zero-Energy Buildings (NZEB) and achieving minimum shares of Renewable Energy are tremendous. There are various indications raising concerns regarding the reliability of Energy Performance Certificate (EPC) declarations and the quality of the works. Achieving a significant improvement requires strong commitment from authorities and other major players, as well as sufficiently broad societal support.

The QUALICHeCK Project (2014-2017) responded to these challenges by:

- identifying issues in respect to existing procedures;
- highlighting best practices for easy access to reliable EPC input data, delivery of improved quality of the works, as well as more effective compliance frameworks (“lead people to do what they declare”);
- raising awareness and engaging relevant stakeholders.

The QUALICHeCK Platform continues beyond the duration of the QUALICHeCK project, with the ambition to become the meeting point for European based organisations, associations and partnerships with a strong interest in quality of energy efficient building design, construction and renovation works, and energy efficiency compliance frameworks. Our aim is for the QUALICHeCK Platform to be a real driver for increased engagement and accelerated uptake of better compliance and quality of the works in the various EU Member States. Construction 4.0 and BIM are considered as major opportunities for achieving these goals.

The QUALICHeCK platform receives financial support from EURIMA, INIVE EEIG, Tightvent Europe and venticool.

